



Delivering the best seat in the house for every guest



RETRACTABLE STAGE SOLUTIONS

Delivering the Best Seat in the House

Since 1978, Sheridan Seating has been designing, manufacturing and innovating new seating solutions for venues across North America from our home plant in Ontario, Canada. We're proud to bring that home-town conscientiousness to everything we do. From delivering the best seats in the house for every venue to cheering on the home team in every town, Sheridan Seating is your partner in telescopic seating solutions.

Interested in learning more? Let's keep in touch!

 [Sheridan Seating Inc.](#)

 [@SheridanSeating](#)

 [@SheridanSeating](#)

Sales & Quotes: sales@sheridanseating.com

General Info: info@sheridanseating.com

Customer Services: customerservice@sheridanseating.com

Your Local Sheridan Seating Dealer:





Delivering the Best Seat in the House.

Producing a stellar performance for your guests requires more than just a class act. At Sheridan Seating, we know that you also need comfortable seating, and the right stage for the job.

That's why we're proud to manufacture fully-customizable retractable stage solutions – so that no matter where your audience is sitting, they've got the best seat in the house.

Serving multi-use facilities ranging in size from intimate corporate spaces and local arenas to large theatres, Sheridan Seating's line of high-quality, flexible and fully customizable seating and stage solutions will inspire your audience with style and comfort.

Interested in delivering the best seat in the house for every guest? Let's work together to bring your venue's vision to life.



The Sheridan Seating Guarantee includes a 10-year warranty.

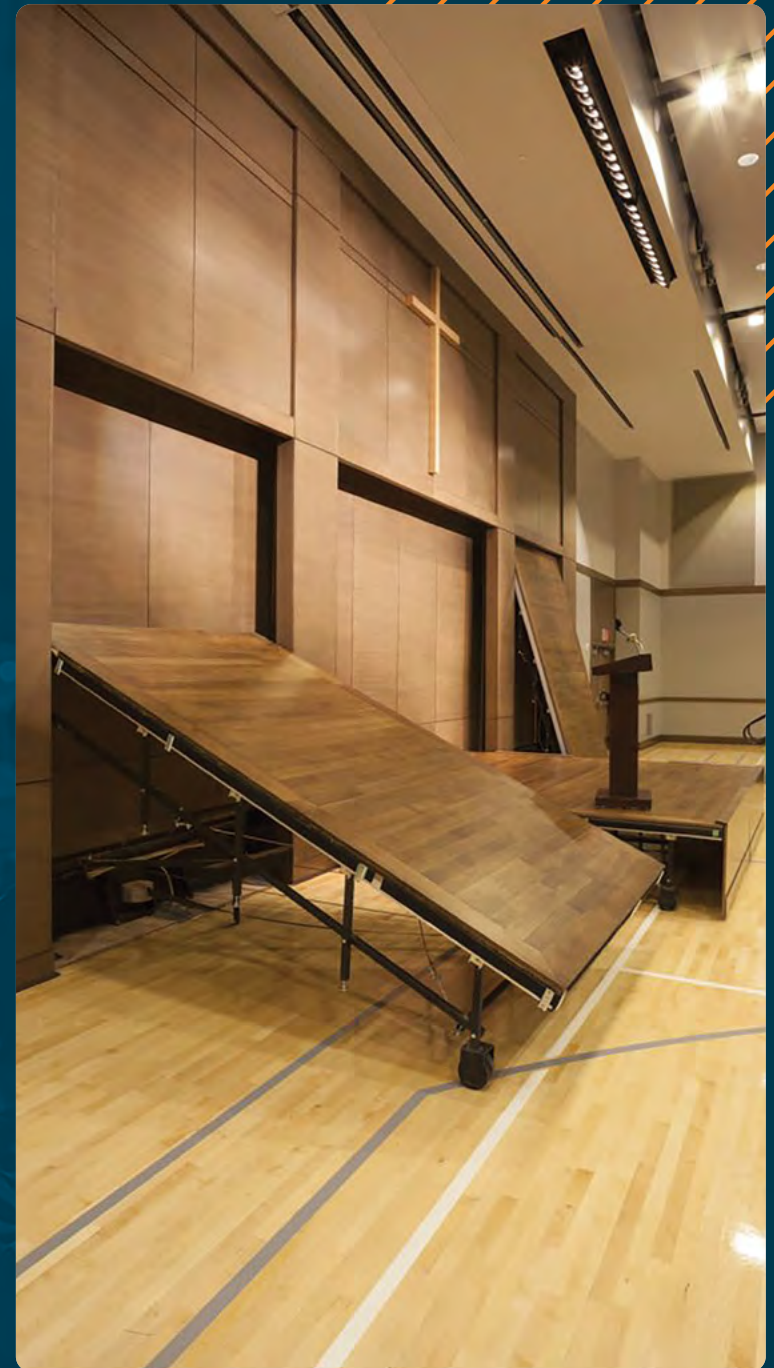
For full warranty details, visit www.sheridanseating.com

Sheridan Seating is proudly certified by the following standards organizations:



Table of Contents

Multi-Purpose Retractable Stages	2
Installation Options.....	6
Design & Finishes	6



RETRACTABLE STAGES

CUSTOM STAGE SOLUTIONS FOR YOUR SPACE

Do you have a mixed use space that needs to do even more for your venue? With a Sheridan Seating retractable stage, you'll get the performance-ready platform of a theatre and the space-saving solution that's as flexible as you are.

Available in two installation options, Recessed Mounted or Surface Mounted, our retractable stages are easy to use and fully customizable. The detachable stairs with handrails and safety-tred steps are code compliant and meet or exceed all ADA requirements.

When closed, the substructure and power mechanics neatly tuck away on the interior of the stage, leaving a sleek, aesthetic exterior finish.

Perfect for:

Multi-Purpose Spaces, Cafeterias, Retail, Dining or Entertainment Spaces, Gymnasiums, Hotels, Conference Rooms, Lecture Halls



PERFORMANCE READY AT THE TURN OF A KEY

With the turn of a key, you can transform your classroom, gymnasium, general-purpose room or cafeteria into a space that's ready for your star performance.

Operated with an electric winch assembly, Sheridan Seating retractable stages can be driven by a 120V Single Phase, 208V Single Phase or 208V Three-Phase instant reverse motor to ensure a smooth, simple transition regardless of the size of your installation.

With this winch, both the surface mount and recessed mount stages can fold up or down in less than a minute.

YOUR DESIGN AMBITIONS. OUR CUSTOM SOLUTIONS.

Are you working with a challenging layout or unique architectural details in your space? Our team can overcome any design challenge, and your stage will be designed to fit.

- ✓ Historical Buildings
- ✓ National Monuments
- ✓ Unconventional Architectural Configurations
- ✓ Slanted Ceilings



Convert your space in less than a minute



Fully customizable to suit your venue



Quick and easy for staff to operate



Accessibility ramps and rails available



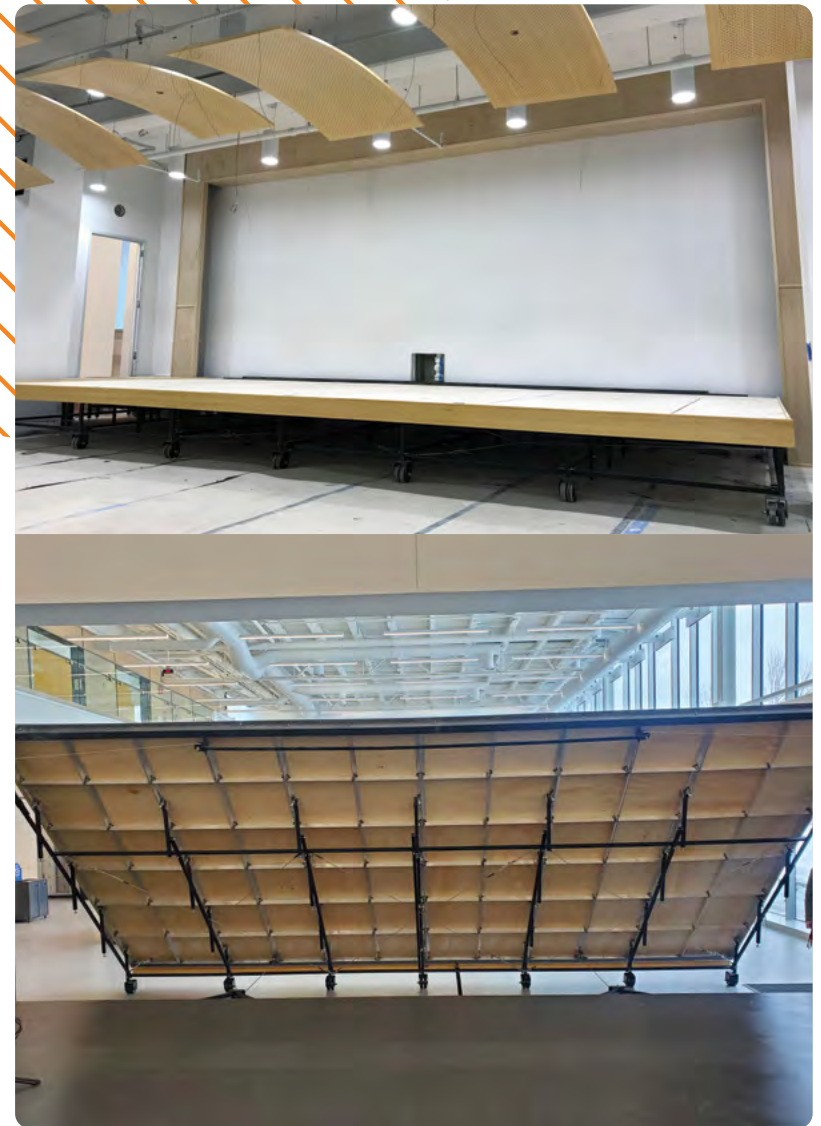
Bring your brand to life with custom graphics



**PERFORMANCE
READY AT THE
TURN OF A KEY**

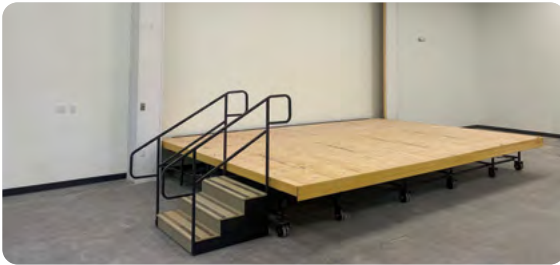
Endless Sizes. Endless Possibilities.

Not only are Sheridan Seating's retractable stages big on functionality, but they're also big on style. Manufactured in a starting size of 6' x 6', Sheridan Seating is proud to offer fully custom sizes to meet your needs - every time.

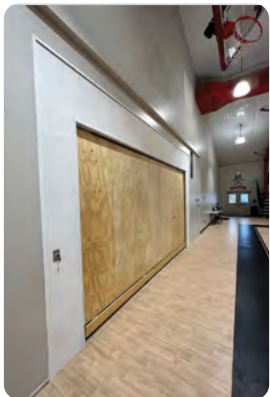


INSTALLATION OPTIONS

Surface Mounted: Sheridan Seating's surface-mounted retractable stage is a great option for existing venue retrofits or renovations where construction and disruptions need to be kept to a minimum. Choose this surface-mounted option if you're looking to inspire an audience while keeping costs down.



Recessed-Mounted: If you have an existing niche or alcove in your venue and you're not sure how to make the most of it, a Sheridan Seating recessed-mounted retractable stage may be a great option. While in the closed position, this installation method allows for the stage to sit flush with the wall, creating a seamless look from the outside. The perfect partnership between beauty and functionality.



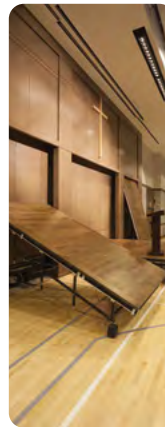
FINISH OPTIONS

Sheridan Seating's retractable stage platforms are made solid and free of hardware or hinge joints, ensuring a safe and attractive surface. The best part? Our stages are fully customizable, so you'll never have to design your venue around our products.

Choose from a selection of finish options to get your custom design started:

Stage Surface is available in:

- Carpeting
- Wood
- Linoleum



Stage Shroud is available in:

- Primed finish
- Paint-grade plywood
- Select Birch plywood
- Select Oak plywood

Stage Skirt

- Hardwood
- Paint-grade plywood
- Fabric with velcro

360° GRAPHICS

Wrap your stage in 360° of style with Sheridan Seating's custom vinyl wraps. Available in vibrant, full-colour customizations, these eye-catching finishes are sure to inspire every guest.

Are you looking for a finish that you don't see listed here? Let us know! We'd be happy to customize a retractable stage solution for you.

